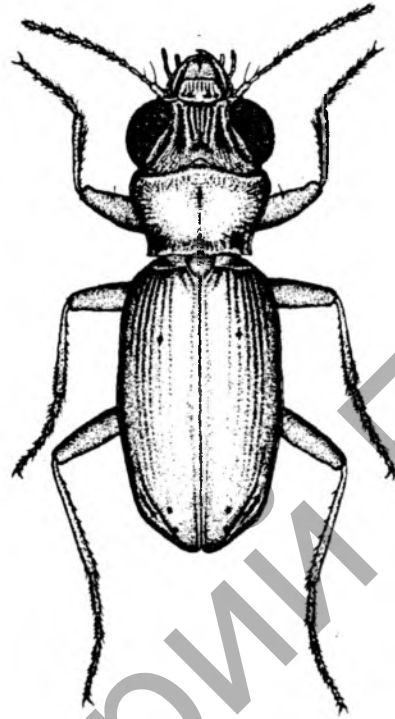


ISSN 1407 - 8619



BALTIC JOURNAL OF COLEOPTEROLOGY

Volume 5, No. 2 (2005)

Published by Baltic Society of Coleopterology, Latvia;
Daugavpils University, Latvia;
Warsaw Agricultural University, Poland

Addition to the checklist of beetles (*Coleoptera*) for the Belarusian part of the Bialowieza Primeval Forest.

Vadim A. Tsinkevich, Oleg R. Aleksandrowicz, Mikhail A. Lukashenya

Tsinkevich V.A., Aleksandrowicz O.R., Lukashenya M.A. 2005. Addition to the checklist of beetles (*Coleoptera*) for the Belarusian part of the Bialowieza Primeval Forest. *Baltic J. Coleopterol.*, 5(2): 147 - 160.

A list of 398 beetles species (*Coleoptera*) recorded from the Belarusian part of the Bialowieza Primeval Forest has been compiled using earlier publications (51 species) and the authors own data (347 species). Eleven species are new for Belarus: *Agrilus salicis*, *Aplocnemus impressus*, *Aulonthroscus laticollis*, *Corticaria lateritia*, *Hadreule elongata*, *Isorhipis marmottani*, *Leptinus testaceus*, *Mniophila muscorum*, *Palorus subdepressus*, *Plateumaris weisei*, *Selatosomus melancholicus*. 41 species are new for the Bielawieza Primeval Forest. In total, 1768 species of 88 *Coleoptera* families are known in the Belarusian part of the Bielawieza Primeval Forest.

Key words: Coleoptera, beetles, fauna, Bialowieza Primeval Forest, Belarus

Vadim A. Tsinkevich, Belarusian State University, Skaryna avenue, 4, Minsk, 220050, Belarus, e-mail: tsinkevichva@mail.ru

Oleg R. Aleksandrowicz, Pomeranian Pedagogical Academy, Institute of Biology and Environment Protection, Arciszewski str., 22-B, 76-200, Slupsk, Poland, e-mail: oleg.aleksandrowicz@pap.edu.pl

Mikhail A. Lukashenya, National Park "Belovezkaya Puscha", Kamieniuki, Belarus.

INTRODUCTION

The "Catalogue of the fauna of Bialowieza Primeval Forest" (2001) summarised the results of long-term studies on all groups of animals, including the *Coleoptera* of the Belarusian and Polish parts of the Bialowieza Primeval Forest (BPF). In the Catalogue for the Belarusian part of the BPF the checklist of *Coleoptera* comprises 1372 species from 72 families, for the Polish part

it contents 2691 species from 88 families (Gutowski, Jaroszewicz 2001). These data show the poor level of investigation of the Belarusian part of the BPF.

Therefore, we made an attempt to supplement the checklist of *Coleoptera* species based on the analyses of personal collections as well as the examination of materials from available pri-

vate collections, museums, and by help of bibliography.

Abbreviation: the names of the collectors, (TVA) – Tsinkevich V. A.; (AOR) – Aleksandrowicz O. R.; (MVM) – Maksimenkov M. V.; (LMA) – Lukashenya M. A.; (BPF) – Bialowieza Primeval Forest; comp. – compartment; ex. – specimen(s).

MATERIAL AND METHODS

The present paper is based on the results of the analyses of personal samplings carried out on the territory of the BPF from 1986 to 2005. The material was collected mainly in the area situated near the village Kamieniuki (S part of BPF), Brovsk (N part), and “Dzikaje” bog (NE part). To collect material we have used standard entomological methods: pitfall traps, windows traps on tinder, netting, collecting by hand in mushrooms, the organic residues, under a bark of dead trees, in the holes of trees and forest litter. Altogether, more than 10 000 specimens were collected.

In addition to the personal materials we have analysed collections of S.V. Saluk and A.I. Rubchenya stored in the Zoological Museum of Belarusian State University (Minsk, Belarus) as well as the collections of dr G.A. Kozylko (vil. Kamieniuki, Belarus) and M.V. Maksimenkov (Institution of Zoology National Academy of Science, Minsk, Belarus).

The results of the research are represented as a checklist of species, in which for every species the number of the area or the place, where it was found, is given. Species in the checklist found in the territory of the BPF for the first time both in the Polish or the Belarusian part are marked with (*), species new for the fauna of Belarus are marked with (!). Moreover, the complete information concerning the place and date of their registration is given. Species mentioned in literature but not included in the catalogue are provided with an attribution, where they were first mentioned for the fauna of the BPF. The order and range of the families is in accordance to the Cata-

logue of the fauna of the Bialowieza Primeval Forest (2001).

RESULTS

List of misidentified species

Monotomidae

Rhizophagus cribratus Gyllenhal, 1827 – [sic !] error in Kubisz (2001). The species was not found in Belarus and the Belarusian part of the BPF.

Latridiidae

Corticaria lateritia (Mannerheim, 1844) – [sic !] error in Majewski (2001). The species is absent in the article by Saluk (1991).

Adds to the list of Coleoptera of the Belarusian part of the Bialowieza Primeval Forest

Carabidae

Chlaenius quadrisulcatus Paykull, 1790 – (Minets, Grichik 2000).

Ch. costulatus (Motschulsky, 1859) – (Minets, Grichi 2000).

**Georissidae*

**Georissus crenulatus* (Rossi, 1794) – at Kamieniuki, bank of the river Lesnaya Pravaya, 29.06.1991, 2 ex. (AOR).

Scydmaenidae

**Cephennium majus* Reitter, 1882 – comp. 800, in the litter, 6.06.1991, 5 ex. (VAT).

Nevraphes elongatulus (Müller et Kunze, 1822) – comp. 800, 823.

Leiodidae

Leodes piceus (Panzer, 1797) – (Solodovnikov 1999).

Anisotoma axillaris Gyllenhal, 1810. – comp. 742.
Agathidium atrum (Paykull, 1798) – (Perkovskijj 1991).

A. badium Erichson, 1845 – (Perkovskijj 1991).

Sciodrepoides watsoni (Spence, 1815) – comp. 800, 801.

**Catops morio* (Fabricius, 1787) – comp. 772, pitfall trap, 10.07.1992, 1 ex. (AOR); 20.07.1992, 5 ex. (AOR); ibidem, 10.08.1992, 1 ex. (AOR); ibidem, 10.09.1992, 1 ex. (AOR).

C. nigricans (Spence, 1815) – comp. 772, pitfall trap, 10.07.1992, 1 ex. (AOR).

**C. kirbii* (Spence, 1815) – comp. 772, pitfall trap, 10.07.1992; 1 ex. (AOR).

C. westi Krogerus, 1931 – comp. 772, pitfall trap, 10.07.1992, 1 ex. (AOR).

Colon latum Kraatz, 1850 – (Perkovskij 1991).

!*Leptinus testaceus* P.W.J. Müller, 1817 – comp. 828, in the nest of mice in a hollow of lying dead spruce, 18.05.2005, 3 ex. (TVA).

Silphidae

Nicrophorus humator Olivier, 1790 – comp. 823.

N. investigator (Zetterstedt, 1824) – comp. 742, 770, 771, 823, 966.

N. vespillo (Linnaeus, 1758) – comp. 742, 770, 771, 823, 966.

N. vespilloides Herbst, 1783 – comp. 742, 770, 771, 823, 966.

N. vestigator Herbst, 1807 – comp. 742, 770, 771, 800, 823, 966.

Thanatophilus dispar Herbst, 1793 – comp. 742, 771.

Th. rugosus Linnaeus, 1758 – comp. 742, 771.

Oiceoptoma thoracica Linnaeus, 1758 – comp. 742, 770, 771, 823, 966.

Aclypea opaca Linnaeus, 1758 – comp. 823.

Dendroxena quadrimaculata (Scopoli, 1772) – comp. 742, 828.

Silpha carinata Herbst, 1783 – comp. 823.

S. obscura Linnaeus, 1758 – comp. 742, 770, 771, 966, 823.

S. tristis Illiger, 1798 – comp. 742, 770, 771, 966, 823.

Phosphuga atrata (Linnaeus, 1758) – comp. 742, 770, 771, 966, 823.

Staphylinidae

**Bryoporus cernuus* (Gravenhorst, 1806) – comp. 742, window trap on *Laetiporus sulphureus* (Bull.: Fr.) Murrill, 08.06–11.07.1994, 15 ex. (TVA).

Gyrophana minima Erichson, 1837 – comp. 801.

Atheta basicornis (Mulsant et Rey, 1852) – comp. 742, on *Ganoderma lipsiense* (Batsch.) G.F. Atk., 11.07.1994, 1 ex. (TVA).

A. dadopora Thomson, 1867 – comp. 742.

**Xylodromus testaceus* Erichson, 1840 – comp. 823, on *Laetiporus sulphureus* (Bull.: Fr.) Murrill, 08.06.1994, 2 ex. (TVA).

Scaphisoma agaricinum (Linnaeus, 1758) – comp. 742.

S. inopinatum (Löbl, 1967) – comp. 823.

Scaphidium quadrimaculatum Olivier, 1790 – comp. 742, 771, 774, 823.

Pselaphus heisei Herbst, 1792 – comp. 782, in the litter, 6.06.1991, 1 ex. (VAT).

Brachygluta fossulata (Reichenbach, 1816) – comp. 771, 800.

Sphaeritidae

Sphaerites glabratus (Fabricius, 1792) – comp. 742, 771

Histeridae

Abraeus granulum Erichson, 1839 – comp. 742.

A. perpusillus (Marsham, 1802) – comp. 823b.

Plegaderus caesus (Herbst, 1792) – comp. 771.

P. vulneratus (Panzer, 1797) – comp. 770, 771, 823.

Acritus minutus (Herbst, 1792) – comp. 742.

Dendrophilus corticalis (Paykull, 1798) (= *punctatus* (Herbst, 1792)) – comp. 823b.

Platylomalus complanatus (Panzer, 1797) – comp. 771.

Paromalus parallelepipedus (Herbst, 1792) – comp. 762.

Š. flavicornis (Herbst, 1792) – (Aleksandrovich, Tishechkin 1991).

Margarinotus carbonarius (Hoffmann, 1803) – comp. 800, 801.

M. purpurascens (Herbst, 1792) – comp. 800, 801.

M. striola (Sahlberg, 1819) – comp. 823.

M. ventralis (Marseul, 1854) – comp. 800, 801.

Hister unicolor Linnaeus, 1758 – comp. 800, 801.

Platysoma deplanatum (Gyllenhal, 1808) – comp. 946.

P. elongatum (Thunberg, 1787) (= *oblongum* Fabricius, 1792) – comp. 946.

P. ferrugineum (Thunberg, 1794) (= *angustatum* Hoffman, 1803) – (Aleksandrovich, Tishechkin 1991).

P. lineare (Erichson, 1834) – (Aleksandrovich, Tishechkin 1991).

Hololepta plana (Sulzer, 1776) – comp. 823.

Hetaerius ferrugineus (Olivier, 1759) – comp. 966.

Scarabaeidae

Osmoderma eremita (Scopoli, 1763) – near Kamieniuki, comp. 828.

Eucinetidae

Eucinetus haemorrhoidalis (Germar, 1818) – comp. 47, 48, 771, 952.

Scirtidae

**Elodes minuta* (Linnaeus, 1767) – at Brovki, 16.06.1990, 1 ex. (AOR).

Cyphon padi (Linnaeus, 1758) – comp. 948.

Scirtes haemisphaericus (Linnaeus, 1767) – comp. 778, 779.

Byrrhidae

**Simplocaria semistriata* (Fabricius, 1794) – comp. 948, pitfall trap, 19-29.06.1992, 2 ex. (AOR).
Morychus aeneus (Fabricius, 1775) – comp. 779, 948.

**Lamprobyrrhulus nitidus* (Schaller, 1783) – comp. 948, pitfall trap, 19-29.06.1992, 2 ex. (AOR).

Cytilus sericeus (Förster, 1771) (= *auricomus* (Duftschmid, 1825)) – comp. 742, 770, 771, 800, 823, 966.

Byrrhus fasciatus (Förster, 1771) – comp. 948.

B. pilula (Linnaeus, 1758) – comp. 823, 948.

B. pustulatus (Förster, 1771) – comp. 948.

**Porcinolus murinus* (Fabricius, 1794) – comp. 948, pitfall trap, 19-29.06.1992, 1 ex. (AOR).

Nosodendridae

Nosodendron fasciculare (Olivier, 1790) – (Aleksandrovich, Tsinkevich 1993).

Dermestidae

Dermestes lardarius Linnaeus, 1758 – comp. 823.

D. murinus Linnaeus, 1758 – comp. 823.

Attagenus pellio (Linnaeus, 1758) – comp. 972.

A. schaeferi (Herbst, 1792) – comp. 770, 771.

A. unicolor (Brahm, 1791) – comp. 823.

Megatoma undata (Linnaeus, 1758) – comp. 771.

Ctesias serra (Fabricius, 1792) – comp. 771.

Anthrenus museorum (Linnaeus, 1761) – comp. 823.

A. polonicus Mroczkowski, 1951 – comp. 800.

A. scrophulariae (Linnaeus, 1758) – comp. 801, 823.

Eucnemidae

!*Isorhipis marmottani* (Bonvouloir, 1871) – 1 male and 1 female reared from larvae, larvae were recorded on 29.04.1991 in dry *Alnus* sp. (AOR).

Melasis buprestoides (Linnaeus, 1761) – comp. 742, 770, 823.

Microrhagus lepidus Rosenhauer, 1847 – comp. 742.

M. pygmaeus (Fabricius, 1792) – comp. 773.

Otho sphondyloides (Germar, 1818) – comp. 771.

Xyloecus corticalis (Paykull, 1800) – (Tsinkevich 1997).

Buprestidae

Chrysobothris affinis (Fabricius, 1794) – comp. 823.

C. chrysostigma (Linnaeus, 1758) – comp. 823.

**Coraebus elatus* (Fabricius, 1787) – bog “Dzikaje”, 24.06.2001, 12 ex. (MVM).

!*Agrilus salicis* Frivaldszky, 1877 – bog “Dzikaje”, 20.06.1999, 1 ex. (MVM).

A. pseudocyaneus Kiesenwetter, 1857 – bog “Dzikaje”.

Elateridae

Drapetes mordelloides (Host, 1789) – (Tsinkevich, Aleksandrovich 2001).

Lacon lepidopterus (Panzer, 1801) – (Tsinkevich, Aleksandrovich 2001).

Negastrius pulchellus (Linnaeus, 1761) – comp. 800.

Ctenicera pectinicornis (Linnaeus, 1758) – comp. 823.

Anostirus castaneus (Linnaeus, 1758) – comp. 823.

!*Selatosomus melancholicus* (Fabricius, 1798) – bog “Dzikaje”, 21.06.2000, 1 ex. (MVM).

S. nigricornis (Panzer, 1799) – comp. 742.

Calambus bipustulatus (Linnaeus, 1767) – comp. 805.

Ampedus erythrogonus (Müller, 1821) – comp. 742, 770, 771, 773, 823.

A. karpaticus (Buysson, 1848) – comp. 770, 771.

A. nigroflavus (Goeze, 1777) – comp. 680, 771, 800, 827, 773.

A. tristis (Linnaeus, 1758) – comp. 770, 771.

Agriotes obscurus (Linnaeus, 1758) – comp. 589, 800.

Adrastus limbatus (Fabricius, 1777) – comp. 823.

Synaptus filiformis (Fabricius, 1781) – near Kamieniuki.

Cardiophorus asellus Erichson, 1840 – comp. 823.

C. ruficollis (Linnaeus, 1758) – comp. 823b, 946.

Dicronychus equiseti (Herbst, 1784) – comp. 882, 946.

Throscidae

!*Aulonothroscus laticollis* (Rybiński, 1897) – comp. 779, in a spruce-wood affected with brown rot, 05.10.2004, 22 ex. (LMA).

Trixagus dermestoides (Linnaeus, 1767) – comp. 770, 823.

***Limnichidae**

**Limnichus sericeus* (Duftschmid, 1825) – near Kamieniuki, bank of the river Lesnaya Pravaya, 29.06.1991, 1 ex. (AOR).

Lycidae

Dictyoptera aurora (Herbst, 1784) – comp. 742, 770, 771, 801, 823, 827.

D. erythroptera (Baudi a Selve, 1872) – comp. 742, 801.

Pyropterus nigroruber (Degeer, 1774) – comp. 967.

Platycis minuta (Fabricius, 1787) – comp. 584.

Lampyridae

Lampyris noctiluca (Linnaeus, 1758) – near Kamieniuki.

Cantharidae

Podabrus alpinus (Paykull, 1798) – comp. 771.

Cantharis figurata Mannerheim, 1843 – comp. 742, 772.

**C. fulvicollis* Fabricius, 1792 – near Kamieniuki.

C. fusca Linnaeus, 1758 – comp. 742, 770, 771, 801, 823, 827.

C. obscura Linnaeus, 1758 – comp. 742, 770, 771, 801, 823, 827.

C. pallida Goeze, 1777 – comp. 772.

Rhagonycha testacea (Linnaeus, 1758) – 800, 823.

Absidia schoenherri (Dejean, 1837) – comp. 740, 770.

Silis nitidula (Fabricius, 1792) – comp. 770; bog “Dzikaje”.

S. ruficollis (Fabricius, 1775) – comp. 770; bog “Dzikaje”.

Anobiidae

Xestobium rufovillosum (Degeer, 1774) – comp. 823.

Ernobius abietis (Fabricius, 1792) – comp. 948.

Stegobium paniceum (Linnaeus, 1758) – at Kamieniuki and Brovsk.

Anobium punctatum (Degeer, 1774) – comp. 472, 742.

A. rufipes Fabricius, 1792 – in the collection of the museum of the Bialowieza Primeval Forest.

Microbregma emarginata (Duftschmid, 1825) – comp. 472, 742.

Hadrobregmus pertinax (Linnaeus, 1758) – comp. 684, 742, 823b, 948.

Priobium carpini (Herbst, 1793) – at Kamieniuki.

Ptilinus pectinicornis (Linnaeus, 1758) – comp. 740, 742, 820.

Dorcatoma dresdensis Herbst, 1792 – comp. 742, 771, 823.

D. robusta Strand, 1938 – (Tsinkevich 1997).

Ptinidae

Ptinus rufipes Olivier, 1790 – comp. 708, 771, 801.

P. fur (Linnaeus, 1758) – at Brovsk.

***Bostrichidae**

**Rhizopertha dominica* (Fabricius, 1792) – at Kamieniuki.

Lymexylidae

Hylecoetus dermestoides (Linnaeus, 1761) – comp. 742.

H. flabellicornis (Schneider, 1791) – comp. 559, 823.

Cleridae

Necrobia violacea (Linnaeus, 1758) – near Kamieniuki

Thanasimus femoralis (Zetterstedt, 1828) – comp. 805.

Dermestoides sanguinicornis (Fabricius, 1787) – comp. 823, 5.05.1996, on standing dry dead oak, 1 ex., (AOR)

Trogossitidae

Nemozoma elongatum (Linnaeus, 1761) – in the collection of the museum of the Bialowieza Primeval Forest.

Grynocharis oblonga (Linnaeus, 1758) – comp. 823.

Melyridae

Malachius aeneus (Linnaeus, 1758) – near Kamieniuki.

Anthocomus coccineus Schaller, 1783 – near Kamieniuki.

Aplocnemus impressus (Marsham, 1802) – near Kamieniuki, 23.04.1991, 1 ex. (AOR).

Dasytes cyaneus (Fabricius, 1775) – (Tsinkevich, Aleksandrovich, 2002).

Kateritidae

Heterhelus solani Heer, 1841 – (Tsinkevich, Solodovnikov, Rud'ko, 2001).

Nitidulidae

Meligethes brunnicornis Sturm, 1845 – comp. 807.

Glischrochilus quadrisignatus (Say, 1835) – comp. 742, 771, 770, 800, 823.

Silvanidae

Silvanus unidentatus (Olivier, 1790) – (Tsinkevich, 1998).

Cucujidae

Pediacus dermestoides (Fabricius, 1792) – comp. 292.

Phalacridae

Phalacrus caricis Sturm, 1807 – comp. 710.

Olibrus aeneus (Fabricius, 1792) – comp. 773.

O. bimaculatus Küster, 1848 – comp. 823

Stilbius atomarius (Linnaeus, 1767) – comp. 584, 823.

Cryptophagidae

Telmatophilus caricis (Olivier, 1790) – (Tsinkevich 1998).

T. typhae (Fallén, 1802) – (Tsinkevich 1998).

Pteryngium crenatum (Fabricius, 1798) – (Tsinkevich 1998).

Micrambe abietis (Paykull, 1798) – (Tsinkevich 1998).

Cryptophagus acutangulus Gyllenhal, 1827 – (Tsinkevich 1998).

C. dentatus (Herbst, 1793) – (Tsinkevich 1998).

C. labilis Erichson, 1846 – (Tsinkevich 1998).

C. pubescens Sturm, 1845 – (Tsinkevich 1998).

C. quercinus Kraatz, 1852 – (Tsinkevich, Aleksandrovich 2002).

Atomaria affinis (F.Sahlberg, 1834) – (Tsinkevich 1998).

A. atra (Herbst, 1793) – comp. 800.

A. attila Reitter, 1878 – (Tsinkevich, Solodovnikov, Rud'ko 2001).

A. hislopi Wollaston, 1857 – (Tsinkevich 2000).

A. mesomela (Herbst, 1792) – (Tsinkevich 1998).

A. morio Kolenati, 1846 – (Tsinkevich 2000).

A. peltata Kraatz, 1853 – (Tsinkevich 1998).

A. pulchra Erichson, 1846 – (Tsinkevich 1998).

A. turgida Erichson, 1846 – (Tsinkevich 2000).

Erotylidae

Triplax scutellaris Charpentier, 1825 – (Tsinkevich 1998).

Latridiidae

Latridius anthracinus Mannerheim, 1844. – comp. 823.

Latridius hirtus Gyllenhal, 1827 – (Tsinkevich 1998).

L. minutus (Linnaeus, 1767) – (Tsinkevich 1998).

Enicmus histrio Joy et Tomlin, 1903 – (Tsinkevich 1998).

E. transversus (Olivier, 1790) – (Tsinkevich 1998).

E. planipennis Strand, 1941 – (Tsinkevich 1998).

Dienerella filum (Aubé, 1850) – (Tsinkevich 1998).

Stephostethus alternans (Mannerheim, 1844) – (Tsinkevich 1998).

S. angusticollis Gyllenhal, 1827 – (Tsinkevich 1998).

S. lardarius (Degeer, 1775) – (Tsinkevich 1998).

S. pandellei (Brisout de Barneville, 1863) – (Tsinkevich 1998).

S. rugicollis (Olivier, 1790) – comp. 800.

Cartodere constricta (Gyllenhal, 1827).

Corticaria abietorum Motschulsky, 1867 – comp. 806.

C. impressa (Olivier, 1790) – comp. 800, 801.

C. ferruginea Marsham, 1802 – comp. 800, 801.

! *C. lateritia* Mannerheim, 1844 – comp. 745, in a tinder on spruce 28.09.2004, 9 ex.; comp. 805, on the bark of dead spruce 20.08.2004, 2 ex.; comp. 292, on a tinder on spruce, 21.09.2004, 1 ex. (LMA).

C. polypori J. Sahlberg, 1900 – comp. 823.

C. pubescens (Gyllenhal, 1827) – (Tsinkevich 1998).

C. serrata (Paykull, 1798) – comp. 823.

Corticicaria gibbosa (Herbst, 1793) – (Tsinkevich 1998).

Corticarina lambiana (Sharp, 1910) – comp. 823.

C. similata (Gyllenhal, 1827) – (Tsinkevich 1998).

C. truncatella (Mannerheim, 1844) – (Tsinkevich 1998).

Melanophthalma curticolis (Mannerheim, 1844) – (Tsinkevich 1998).

M. suturalis (Mannerheim, 1844) – comp. 823.

Mycetophagidae

* *Mycetophagus ater* (Reitter, 1879) – comp. 292.

M. atomarius (Fabricius, 1787) – comp. 742, 771, 773.

Ciidae

! *Hadreule elongata* (Gyllenhal, 1827) – comp. 479, under the bark of spruce, 28.09.2004, 2 ex. (LMA).

Melandryidae

Hypulus quercinus (Quensel, 1790) – comp. 560; near Kamieniuki.

Abdera triguttata (Gyllenhal, 1810) – comp. 823.

Hallomenus axillaris (Illiger, 1798) – near Kamieniuki.

Oedemeridae

Anogcodes ferruginea (Schrank, 1776) – near Kamieniuki.

A. ustulata (Fabricius, 1787) – near Kamieniuki.

Oedemera lurida (Marsham, 1802) – comp. 740-741.

Colydiidae

Colydium filiforme Fabricius, 1792 – comp. 742, 823.

Synchitia humeralis (Fabricius, 1792) – bog “Dzikaje”.

Tenebrionidae

Melanimon tibiale (Fabricius, 1781) – comp. 823, near Kamieniuki.

Cylindrinotus dermestoides (Illiger, 1798) – comp. 742, 771, 773, 823.

* *Pentaphyllus testaceus* (Hellwig, 1792) – comp. 823.

! * *Palorus subdepressus* (Wollaston, 1864) – at Kamieniuki.

Cerambycidae

* *Pachyta lamed* (Linnaeus, 1758) – bog “Dzikaje”, 21.06.2001, 1 ex. (MVM).

Megalopodidae

Zeogophora subspinosa (Fabricius, 1781) – near Kamieniuki.

Chrysomelidae

Bruchus loti Paykull, 1800 – near Kamieniuki.

Donacia aquatica (Linnaeus, 1758) – bog “Dzikaje”.

* *D. bicolor* Zschach, 1788 – comp. 823, 9.06.1996, 2 ex. (AOR).

* *D. brevicornis* Ahrens, 1810 – comp. 32, 10.08.1990, 1 ex. (AOR).

D. marginata Hoppe, 1795 – comp. 32.

D. semicuprea Panzer, 1796 – comp. 823; Brovsk.

D. simplex Fabricius, 1775 – comp. 823.

D. thalassina Germar, 1811 – comp. 772-773.

D. vulgaris Zschach, 1788 – comp. 326, 823.

Plateumaris affinis (Kunze, 1818) (= *rustica* Kunze, 1818) – bog “Dzikaje”; Brovsk.

P. sericea (Linnaeus, 1758) – bog “Dzikaje”, (MVM).

! * *P. weisei* (Duvivier, 1885) – bog “Dzikaje”, 21.06.2000, 1 ex. (MVM).

Lilioceris merdigera (Linnaeus, 1758) – comp. 949.

Lema cyanella (Linnaeus, 1758) – near Kamieniuki.

Oulema melanopus (Linnaeus, 1758) – comp. 967.

Phyllobrotica quadrimaculata (Linnaeus, 1758) – comp. 800.

Phaedon armoraciae (Linnaeus, 1758) – comp. 771.

- Ph. cochleariae* (Fabricius, 1792) – bog “Dzikaje”; comp. 559, 769, 771; at Kamieniuki.
- Hydrothassa glabra* (Herbst, 1783) – comp. 779, 823.
- H. marginella* (Linnaeus, 1758) – near Kamieniuki, comp. 801.
- Coptocephala unifasciata* (Scopoli, 1763) – bog “Dzikaje”, (MVM).
- **Smaragdina flavicollis* (Charpentier, 1825) – comp. 713, 28.04.1986, 1 ex. (AOR).
- **Cryptocephalus anticus* Suffrian, 1848 (= *octocosmus* Bedel, 1891) – bog “Dzikaje”, 8.08.2000, 2 ex. (MVM).
- C. decemmaculatus* (Linnaeus, 1758) – bog “Dzikaje”, (MVM).
- **C. elegantulus* Gravenhorst, 1807 – bog “Dzikaje”, 8.08.2000, 2 ex. (MVM).
- C. fulvus* (Goeze, 1777) – comp. 614, lake “Lyadskoe”.
- C. janthinus* Germar, 1824 – bog “Dzikaje”, (MVM).
- C. moraei* (Linnaeus, 1758) – bog “Dzikaje”, (MVM); near Kamieniuki.
- C. ocellatus* Drapiez, 1819 – bog “Dzikaje”, (MVM); comp. 614.
- C. octopunctatus* (Scopoli, 1763) – comp. 801.
- C. parvulus* Muller, 1776 – lake “Lyadskoe”.
- C. pusillus* Fabricius, 1777 – lake “Lyadskoe”; bog “Dzikaje”.
- C. sericeus* (Linnaeus, 1758) – bog “Dzikaje”; comp. 742, 770, 771, 801, 823, 827.
- C. vittatus* Fabricius, 1775 – comp. 800, 23.07.1991, 1 ex. (AOR); lake “Lyadskoe”, 11.08.1991, 1 ex. (AOR).
- **Pachnephorus pilosus* (Rossi, 1790) – comp. 771, 25.04.1990, 1 ex. (AOR).
- Gastrophysa polygoni* (Linnaeus, 1758) – comp. 742, 770, 771, 801, 823, 827.
- G. viridula* (Degeer, 1775) – comp. 742, 770, 771, 801, 823, 827.
- Prasocuris phellandrii* (Linnaeus, 1758) – comp. 823.
- Plagioderia versicolore*a (Laichatring, 1781) – comp. 21; near Kamieniuki.
- Chrysomela collaris* Linnaeus, 1758 – near Kamieniuki.
- Ch. populi* Linnaeus, 1758 – near Kamieniuki.
- Ch. tremula* Fabricius, 1787 – near Kamieniuki.
- Ch. vigintipunctata* (Scopoli, 1763) – near Kamieniuki, 4.05.1993, 1 ex. (AOR).
- Chrysolina fastuosa speciosa* (Linnaeus, 1767) – comp. 742, 770, 771, 801, 823, 827.
- Ch. hyperici* (Forster, 1771) – near Kamieniuki.
- **Ch. geminata* (Paykull, 1799) – comp. 32, 10.08.1990, 1 ex. (AOR).
- **Ch. graminis* (Linnaeus, 1758) – near Kamieniuki, 25.04.1990, 2 ex. (AOR).
- Ch. polita* (Linnaeus, 1758) – near Kamieniuki; comp. 21, 31, 769, 771, 801, 802, 559.
- Ch. sanguinolenta* (Linnaeus, 1758) – comp. 772, 561.
- Ch. staphylaea* (Linnaeus, 1758) – comp. 801.
- Ch. varians* (Schaller, 1783) – comp. 32, 54, 967, near Kamieniuki.
- Linnaeidea aenea* (Linnaeus, 1758) – lake “Lyadskoe”; comp. 614; near Kamieniuki.
- **Gonioctena quinquepunctata* (Fabricius, 1787) – comp. 741, 6.05.1993, 1 ex. (AOR); near Kamieniuki, 29.04.1994, 1 ex. (AOR).
- **G. pallida* (Linnaeus, 1758) – comp. 771, 25.04.1990, 1 ex. (AOR).
- Phratora laticollis* (Suffrian, 1851) – lake “Lyadskoe”; comp. 801.
- Ph. tibialis* (Suffrian, 1851) – near Kamieniuki.
- Ph. vitellinae* (Linnaeus, 1758) – near Kamieniuki.
- Galerucella grisescens* (Joannis, 1865) – comp. 800.
- G. lineola* (Fabricius, 1781) – comp. 32, 559, 614, 771, 801.
- G. nymphaeae* (Linnaeus, 1758) – comp. 559, 769-771; bog “Dzikaje”, (MVM).
- G. pusilla* (Duftschmid, 1825) – near Kamieniuki; bog “Dzikaje”, (MVM).
- G. tenella* (Linnaeus, 1761) – near Kamieniuki; comp. 32, 559, 769-771.
- Lochmaea caprea* (Linnaeus, 1758) – comp. 559, 740, 771, 772.
- Galeruca tanacetii* (Linnaeus, 1758) – near Kamieniuki; comp. 827.
- Batophila rubi* (Paykull, 1799) – comp. 589, 769-771.
- Lythrarina salicariae* (Paykull, 1800) – comp. 773.
- Asiolestia ferruginea* (Scopoli, 1763) – comp. 559, 779, 800, 823.
- A. nigritula* (Gyllenhal, 1813) – comp. 779, 800.
- A. transversa* (Marshall, 1802) – comp. 32, 779, 800, 823 lake “Lyadskoe”.
- Phyllotreta affinis* (Paykull, 1799) – 740-742.
- Ph. atra* (Fabricius, 1775) – bog “Dzikaje”.

- Ph. exclamatoris* (Thunberg, 1784) – near Kamieniuki, 23.05.1991, 2 ex. (AOR).
Ph. flexuosa (Illiger, 1794) – bog “Dzikaje”, (MVM).
Ph. nemorum (Linnaeus, 1758) – lake “Lyadskoe”; bog “Dzikaje”; comp. 32, 589, 963.
Ph. ochripes (Curtis, 1837) – near Kamieniuki.
Ph. undulata Kutschera, 1860 – lake “Lyadskoe”; comp. 32, 769, 771; bog “Dzikaje”.
Ph. vittata (Fabricius, 1801) (= *striolata* (Fabricius, 1803)) – comp. 769-771, 773.
Aphthona euphorbiae (Schrank, 1781) – comp. 769, 771; bog “Dzikaje”.
A. lutescens (Gyllenhal, 1813) – comp. 769-771; bog “Dzikaje”.
A. nonstriata (Goeze, 1777) – comp. 32, 740, 741, 772, 773.
Longitarsus melanocephalus (Degeer, 1775) – near Kamieniuki; comp. 769, 771.
L. holsaticus (Linnaeus, 1758) – bog “Dokudovo”, 30.07.1992, 1 ex. (AOR).
L. parvulus (Paykull, 1799) – comp. 590; near Kamieniuki.
 **L. suturellus* (Duftschmid, 1825) – bog “Dokudovo”, 12.08.1991, 1 ex. (AOR).
Altica lythri Aubé, 1843 – bog “Dzikaje”, (MVM).
A. oleracea (Linnaeus, 1758) – near Kamieniuki; comp. 769-771; lake “Lyadskoe”.
Hippuriphila modeeri (Linnaeus, 1761) – bog “Dzikaje”, (MVM).
Crepidodera aurata (Marsham, 1802) – bog “Dokudovo”; near Kamieniuki.
C. fulvicornis (Fabricius, 1792) – near Kamieniuki; bog “Dzikaje”, comp. 32, 589, 963.
 **C. plutus* (Latreille, 1804) – comp. 21, 17.06.1990, 1 ex. (AOR).
Mantura chrysanthemi (Koch, 1803) – comp. 32, 800, 953, 967.
Chaetocnema compressa (Letzner, 1847) – bog “Dzikaje”, (MVM).
Ch. concinna (Marsham, 1802) – comp. 32.
Ch. heikertingeri Lubischev, 1963 – near Kamieniuki.
Ch. hortensis (Geoffroy, 1785) – comp. 769-771; near Kamieniuki; bog “Dzikaje”.
 **C. tibialis* (Illiger, 1807) – comp. 769-771, 29.04.1990, 2 ex. (AOR).
 **Sphaeroderma rubidum* (Gräells, 1858) – near Kamieniuki, 6.06.1991, 1 ex. (AOR); bog “Dokudovo”, 12.08.1991, 1 ex. (AOR).
 !**Mniophila muscorum* (Koch, 1803) – comp. 479, under the dead bark of oak 28.09.2004, 1 ex. (LMA).
Psylliodes affinis (Paykull, 1799) – comp. 740-742.
P. cucullata (Illiger, 1807) – comp. 32, 772-773, 800, 967; bog “Dzikaje”, (MVM).
P. cuprea (Koch, 1803) – bog “Dokudovo”.
P. dulcamarae (Koch, 1803) – lake “Lyadskoe”.
P. napi (Fabricius, 1792) – comp. 21, 10.08.1990, 2 ex. (AOR).
Phaedon cochleariae (Fabricius, 1792) – near Kamieniuki.
Hispa atra Linnaeus, 1767 – near Kamieniuki; comp. 779.
Hypocassida subferruginea (Schrank, 1776) – near Kamieniuki.
 **Cassida azurea* Fabricius, 1801 – bog “Dzikaje”, 11.07.2000, 1 ex. (MVM).
C. denticollis Suffrian, 1844 – near Kamieniuki.
 **C. ferruginea* Goeze, 1777 – bog “Dzikaje”, 11.07.2000, 1 ex. (MVM).
C. flaveola Thunberg, 1794 – comp. 32, 561, 801, 823.
C. murraea Linnaeus, 1767 – comp. 940.
C. nebulosa Linnaeus, 1758 – comp. 772, 947; near Kamieniuki.
 **C. sanguinosa* Suffrian, 1844 – near Kamieniuki, 4.05.1993, 1 ex. (AOR).
C. viridis Linnaeus, 1758 – near Kamieniuki.
C. vittata Villers, 1789 – near Kamieniuki.
- Anthribidae**
Platyrhinus resinosus (Scopoli, 1763) – comp. 823.
Platystomos albinus (Linnaeus, 1758) – near Kamieniuki.
- Nemonychidae**
Cimberes attelaboides (Fabricius, 1787) – comp. 946.
- Atellabidae**
 **Temnocerus* (= *Pselaphorhynchites* Schilsky, 1903) *aeneovirens* (Marsham, 1802) – coniferous forest, 29.04.1986, 1 ex. (AOR).
Involvulus (= *Rhynchites* Schneider, 1791) *cupreus* (Linnaeus, 1758) – coniferous forest, 29.04.1986, 1 ex. (AOR).

Apionidae

- Diplapion stolidum* (Germar, 1817) – lake “Lyadskoe”.
Ceratapion penetrans Germar, 1817 – comp. 947, 948.
 **C. buddebergi* Bedel, 1885 – road in Kamieniuki, 5.06.1996, 1 ex. (AOR).
Cyanapion spencii (Kirby, 1808) – comp. 771.
Apion haematodes Kirby, 1808 – near Kamieniuki.
A. rubiginosum Grill, 1893 – comp. 963.

Curculionidae

- Phyllobius calcaratus* (Fabricius, 1792) – comp. 778, 800.
Otiorynchus repletus Boheman, 1843 – comp. 771.
O. scaber (Linnaeus, 1758) – comp. 741.
Grypus brunnirostris (Fabricius, 1792) – near Kamieniuki.
G. equiseti (Fabricius, 1775) – near Kamieniuki.
Coniocleonus hollbergi (Fahraeus, 1842) – comp. 800.
Hypera arator (Linnaeus, 1758) – comp. 823.
Ceutorhynchus assimilis (Paykull, 1792) – comp. 32; near Kamieniuki.
C. cochleariae (Gyllenhal, 1813) – near Kamieniuki.
C. constrictus (Marsham, 1802) – near Kamieniuki.
C. pallidactylus (Marsham, 1802) – comp. 964.
C. punctiger (Sahlberg, 1835) – near Kamieniuki, 10.05.1990, 1 ex. (AOR).
C. roberti Gyllenhal, 1837 – near Kamieniuki.
C. scapularis Gyllenhal, 1837 – near Kamieniuki.
C. sulcicollis (Paykull, 1800) – near Kamieniuki.
Rhamphus pulicarius (Herbst, 1795) – comp. 823.
Acalles camelus (Fabricius, 1792) – comp. 682.
Eubrychius velutus (Beck, 1817) – near Kamieniuki.
Rhinoncus bruchoides (Herbst, 1784) – near Kamieniuki.
Notaris maerkeli (Boheman, 1843) – near Kamieniuki.
N. scipri (Fabricius, 1792) – lake “Lyadskoe”, comp. 823.
Dorytomus dejeani Faust, 1882 – comp. 771.
Cionus scrophulariae (Linnaeus, 1758) – comp. 779.
Tanysphyrus lemnae (Paykull, 1792) – comp. 779.

- Dryophthorus corticalis* (Paykull, 1792) – comp. 771-772, 801.
Brachyderes incanus (Linnaeus, 1758) – near Kamieniuki; comp. 800.
Gymnetron antirrhini (Paykull, 1800) – comp. 771.
G. collinum (Gyllenhal, 1813) – comp. 771.
Rhynchaenus salicis (Linnaeus, 1758) – comp. 771, 25.04.1990, 1 ex. (AOR).
Bagous glabrirostris (Herbst, 1795) – near Brovsk.
Rhyncolus ater (Linnaeus, 1758) – comp. 559, 561, 800.
Rh. elongatus (Gyllenhal, 1827) – comp. 742, 771, 774.
Pelenomus waltoni (Boheman, 1843) – comp. 55, 17.08.1990, 4 ex. (AOR).
Isochnus foliorum (Muller, 1764) – comp. 742.
I. populicola (Silfverberg, 1977) – near Kamieniuki.

Scolytidae

- Dryocoetes alni* (Georg, 1856) – comp. 801–802, 29.06.1991, 1 ex. (AOR).
D. autographus (Ratzeburg, 1837) – comp. 614, 773, 805.
D. villosus (Fabricius, 1792) – comp. 850.
Tomicus minor (Harting, 1834) – near Kamieniuki.
Xyleborus monographus (Fabricius, 1792) – comp. 292, 479, 805, 806.
Xyleborinus saxesenii (Ratzeburg, 1837) – comp. 806.
Trypodendron domesticum (Linnaeus, 1758) – comp. 806.
T. lineatum (Olivier, 1795) – comp. 774.
T. signatum (Fabricius, 1792) – comp. 774.

The analyses of bibliography, collections and personal collections allowed to determine the presence of additional 398 species from 52 families in the territory of the Belarusian part of the BPF (51 species due to bibliography and 347 species collected the first time in the Belarusian part of the Bialowieza Primeval Forest), including 41 species registered for the first time for the total territory of the BPF and 11 for the first time for the territory of Belarus.

DISCUSSION

At present 1768 species from 88 families are known for the Belarusian part of the Bialowieza Primeval Forest (table 1), accounting for more than 50 % of the total number of beetle species existing in the territory of Belarus (Alexandrovich et al. 1996).

Table 1: Number of species belonging to the respective beetle families in the Polish (Gutowski, Jaroszewicz, 2001) and the Belarusian part of the Bialowieza Primeval Forest

Family	Poland	Belarus
<i>Microsporidae</i>	1	0
<i>Gyrinidae</i>	7	4
<i>Haliplidae</i>	10	6
<i>Noteridae</i>	2	2
<i>Dytiscidae</i>	85	54
<i>Rhysodidae</i>	1	1
<i>Carabidae</i>	195	217
<i>Georissidae</i>	0	1
<i>Hydrophilidae</i>	46	40
<i>Sphaeritidae</i>	1	1
<i>Histeridae</i>	30	24
<i>Hydraenidae</i>	9	5
<i>Ptiliidae</i>	29	4
<i>Leiodidae</i>	43	26
<i>Scydmaenidae</i>	15	2
<i>Silphidae</i>	17	14
<i>Staphylinidae</i>	478	309
<i>Lucanidae</i>	7	6
<i>Trogidae</i>	1	2
<i>Geotrupidae</i>	5	4
<i>Scarabaeidae</i>	65	47
<i>Eucinetidae</i>	1	1
<i>Clambidae</i>	3	0
<i>Scirtidae</i>	13	9
<i>Dascillidae</i>	1	1
<i>Buprestidae</i>	44	24
<i>Byrrhidae</i>	6	8
<i>Elmidae</i>	1	1
<i>Dryopidae</i>	4	3
<i>Heteroceridae</i>	4	0
<i>Eucnemidae</i>	14	6
<i>Throscidae</i>	4	2
<i>Elateridae</i>	68	50
<i>Limnichidae</i>	0	1
<i>Lycidae</i>	8	5
<i>Lampyridae</i>	3	1
<i>Cantharidae</i>	45	25
<i>Nosodendridae</i>	1	1
<i>Dermestidae</i>	17	10
<i>Anobiidae</i>	32	12
<i>Ptinidae</i>	9	2
<i>Bostrichidae</i>	0	1
<i>Lymexylidae</i>	3	3
<i>Trogossitidae</i>	6	6
<i>Cleridae</i>	6	6
<i>Melyridae</i>	20	9
<i>Sphindidae</i>	2	1
<i>Kateretidae</i>	9	7
<i>Nitidulidae</i>	67	63
<i>Monotomidae</i>	16	11
<i>Silvanidae</i>	8	8
<i>Cucujidae</i>	3	3
<i>Laemophloeidae</i>	3	3
<i>Phalacridae</i>	12	10
<i>Cryptophagidae</i>	60	37
<i>Erotylidae</i>	9	8
<i>Byturidae</i>	2	2
<i>Biphyllidae</i>	2	1
<i>Bothrideridae</i>	2	1
<i>Cerylonidae</i>	6	5
<i>Endomychidae</i>	4	4
<i>Coccinellidae</i>	43	37
<i>Corylophidae</i>	9	2
<i>Latridiidae</i>	42	40
<i>Mycetophagidae</i>	10	9
<i>Ciidae</i>	32	26
<i>Tetratomidae</i>	1	1
<i>Melandryidae</i>	20	16
<i>Mordellidae</i>	19	8
<i>Colydiidae</i>	9	4
<i>Tenebrionidae</i>	41	36
<i>Prostomidae</i>	1	1
<i>Oedemeridae</i>	12	7
<i>Meloidae</i>	3	3
<i>Boridae</i>	1	1
<i>Pythidae</i>	3	1
<i>Pyrochroidae</i>	2	2
<i>Salpingidae</i>	9	4
<i>Anthicidae</i>	8	3

<i>Aderidae</i>	4	2
<i>Scraptiidae</i>	10	7
<i>Cerambycidae</i>	118	89
<i>Megalopodidae</i>	2	1
<i>Chrysomelidae</i>	185	125
<i>Nemonychidae</i>	2	1
<i>Anthribidae</i>	7	3
<i>Attelabidae</i>	13	10
<i>Apionidae</i>	79	34
<i>Curculionidae</i>	377	132
<i>Scolytidae</i>	64	42
<i>Platypodidae</i>	0	1
Total species	2691	1768
Total families	87	88

As shown by table 1 the following families exhibit approximately equal numbers of species belonging to the Polish and the Belarusian part of the BPF: *Noteridae*, *Rhysodidae*, *Hydrophilidae*, *Sphaeritidae*, *Histeridae*, *Hydraenidae*, *Silphidae*, *Lucanidae*, *Trogidae*, *Geotrupidae*, *Scirtidae*, *Dascillidae*, *Byrrhidae*, *Elmidae*, *Dryopidae*, *Lampyridae*, *Nosodendridae*, *Lymexylidae*, *Trogossitidae*, *Cleridae*, *Sphindidae*, *Kateretidae*, *Nitidulidae*, *Silvanidae*, *Laemophloeidae*, *Phalacridae*, *Erotylidae*, *Byturidae*, *Cerylonidae*, *Endomychidae*, *Coccinellidae*, *Latridiidae*, *Mycetophagidae*, *Ciidae*, *Tetratomidae*, *Melandryidae*, *Colydiidae*, *Tenebrionidae*, *Prostomidae*, *Oedemeridae*, *Boridae*, *Pythidae*, *Pyrochroidae*, *Salpingidae*, *Scraptiidae*, *Cerambycidae*, *Nemonychidae*, *Anthribidae*, *Attelabidae*, *Scolytidae*, *Platypodidae*. But families approximately poorly *Dytiscidae*, *Ptiliidae*, *Leiodidae*, *Scydmaenidae*, *Staphylinidae*, *Buprestidae*, *Elateridae*, *Cantharidae*, *Anobiidae*, *Ptinidae*, *Melyridae*, *Cryptophagidae*, *Corylophidae*, *Mordellidae*, *Cerambycidae*, *Apionidae*, *Curculionidae*, *Scolytidae*. Particular attention should be paid to their study.

Thus in the territory of the Belarusian part of the BPF no less than 900 species of Coleoptera might be found in the future. Nowadays the level of the Belarusian part of the BPF fauna study can be evaluated as 60–70%.

With respect to the number beetle species of the Bialowieza Primeval Forest the dense forest considerably surpasses other protected territories of the Republic of Belarus.

Coleoptera fauna of the Belarusian part of the BPF represented by 88 families. The best recognised 64 families (50–100% of Belarusian fauna) are *Noteridae*, *Dytiscidae*, *Rhysodidae*, *Carabidae*, *Georissidae*, *Hydrophilidae*, *Sphaeritidae*, *Hydraenidae*, *Silphidae*, *Lucanidae*, *Trogidae*, *Scarabaeidae*, *Eucinetidae*, *Scirtidae*, *Dascillidae*, *Buprestidae*, *Byrrhidae*, *Dryopidae*, *Eucnemidae*, *Elateridae*, *Lycidae*, *Lampyridae*, *Cantharidae*, *Nosodendridae*, *Lymexylidae*, *Trogossitidae*, *Cleridae*, *Melyridae*, *Sphindidae*, *Kateretidae*, *Nitidulidae*, *Monotomidae*, *Silvanidae*, *Cucujidae*, *Laemophloeidae*, *Phalacridae*, *Cryptophagidae*, *Erotylidae*, *Byturidae*, *Biphylidae*, *Bothrideridae*, *Cerylonidae*, *Endomychidae*, *Coccinellidae*, *Latridiidae*, *Mycetophagidae*, *Ciidae*, *Tetratomidae*, *Melandryidae*, *Colydiidae*, *Tenebrionidae*, *Prostomidae*, *Oedemeridae*, *Boridae*, *Pythidae*, *Pyrochroidae*, *Salpingidae*, *Scraptiidae*, *Cerambycidae*, *Nemonychidae*, *Anthribidae*, *Attelabidae*, *Scolytidae*, *Platypodidae*.

Special attention should be paid to the territory of the Belarusian part of the BPF, especially to the area recently joined to it, the bog "Dzikaje" and attached territories. This is a unique bog track were species typical for the taiga zone of the East-European plain survived: *Chlaenius quadrisulcatus*, *Selatosomus melancholicus*, *Pachyta lamed*, and *Plateumaris weisei*. This fact raises the natural value of the Belarusian part of the BPF and claims a special attention to the territory of this bog track.

Finally, it should be mentioned once again that due to its geographical position and special status (during several centuries the territory of the forest did not undergo man's impact) the Bialowieza Primeval Forest represents the largest reserve of European Coleoptera biodiversity

and constitutes an unique area of a natural pattern of conditions to maintain natural biocenoses. This particular status requires organization of special monitoring researches in the territory of Belarusian part of Bialowieza Primeval Forest.

ACKNOWLEDGEMENTS

The authors are very thankful to I. K. Lopatin (Minsk, Belarus), B. V. Kopotyaev (St. Petersburg, Russia), M. Wanat (Wroclaw, Poland), V. I. Gusarov (St. Petersburg, Russia), and M. Volkovich (St. Petersburg, Russia), for help with determination of the species, to J. M. Gutowski (Bialowieza, Poland) for consultations and sending necessary papers, to A. D. Pisanenko for the possibility to study material at the Zoological Museum of the Belarusian State University (Minsk, Belarus) and to S. V. Saluk (Minsk, Belarus), A. I. Rubchenya (Minsk, Belarus), M. V. Maksimenkov (Minsk, Belarus), D. Bernatsky and G. A. Kozul'ko (vil. Kamenyuki, Belarus) for the loan of material for study.

The first author has been financially supported by Jozef Mianowski Foundation (Poland).

REFERENCES

- Aleksandrovich O. R., Tishechkin A. K. 1991. Obzor zhukov nadsemejstva *Histeroidea* fauny Belorussii (Review the beetles from *Histeroidea* superfamily of the Belarusy fauna). In: Fauna i ehkologia zheskkokrylykh Belorussii. Nauka i tehnik, Minsk. pp. 94–104. (In Russian: abstract in English).
- Aleksandrovich O. R., Tsinkevich V. A. 1993. Zhuki pilulshchiki (*Byrrhidae*), lozhnopilulshchili (*Limnichidae*) i nosodendridy (*Nosodendridae*) fauny Belarusi (The beetles families *Byrrhidae*, *Limnichidae*) i *Nosodendridae* of the Belarusy fauna). Vestnik BGU, Minsk. Ser. 2. Khimiya, Biologiya, Geografiya. N 1: 23–26. (In Russian: abstract in English).
- Alexandrovich O. R., Lopatin I. K., Pisanenko A. D., Tsinkevich V. A., Snitko S. M. 1996. Catalogue of *Coleoptera (Insecta)* of Belarus. Minsk. Fund of Fundamental Investigations of the Republic of Belarus. pp. 103.
- Catalogue of the fauna of Bialowieza Primeval Forest. 2001. Ed. by Gutowski J. M., Jaroszewicz B. IBL, Warszawa. pp. 403.
- Gutowski J. M., Jaroszewicz B. 2001. Coleoptera of Bialowieza Primeval Forest – recapitulation. In: Catalogue of the fauna of Bialowieza Primaval Forest. 2001. Ed. by Gutowski J. M., Jaroszewicz B. IBL, Warszawa. pp. 207–208.
- Kubisz D. Familia *Monotomidae*. 2001. In: Catalogue of the fauna of Bialowieza Primaval Forest. 2001. Ed. by Gutowski J. M., Jaroszewicz B. IBL, Warszawa. pp. 168–169.
- Majewski T. Familia *Latridiidae*. 2001. In: Catalogue of the fauna of Bialowieza Primaval Forest. 2001. Ed. by Gutowski J. M., Jaroszewicz B. IBL, Warszawa. pp. 171–172.
- Minets, Grichik, 2000. Novaya registratziya zhuzhelits roda *Chlaenius* Bonelli na territorii Natsionalnogo parka "Belovezhskaja Pushha" (New registration of carabid beetles from genus *Chlaenius* Bonelli in National Park "Belovezhskaja Pushha"). Vestnik BGU, Minsk. Ser. 2. Khimiya, Biologiya, Geografiya. N 3: 63–64. (In Russian: abstract in English).
- Perkovskijj E. Eh. 1991. K faune lejjodid (*Coleoptera, Leiodida*) Beloussii (Some remarks about Belarusian *Leiodidae* (*Coleoptera*) fauna). In: Fauna i ehkologia zheskkokrylykh Belorussii. Nauka i tehnik, Minsk. pp. 192–196. (In Russian: abstract in English).

- Saluk S.V. 1991. Zhuki skrytniki (*Coleoptera*, *Lathridiidae*) fauny Belorussii. (*Lathridiidae* beetles (*Coleoptera*) of Belarusian fauna). In: Fauna i ehkologia zheskkokrylykh Belorussii. Nauka i tehnik, Minsk. pp. 214–220. (In Russian: abstract in English).
- Belarusi (New and rare species of *Coleoptera* of the Belarusian fauna). Vestnik BGU, Minsk. Ser. 2. Khimiya, Biologiya, Geografiya. N 2: 30–33. (In Russian: abstract in English).
- Solodovnikov I. A. 1999. Katalog zhestkokrtylykh (*Coleoptera*, *Insecta*) Belorusskogo Poozer'ya. (Catalogue of *Coleoptera*, *Insecta* of Belarusian Poozer'e). Vitebsk State University, Vitebsk. p. 37. (In Russian).
- Received: 07.02.2005.
Accepted: 23.09.2005.
- Tsinkevich V. A. 1997. Novye i redkie vidy zhestkokrylykh (*Coleoptera*) Belarusi (New and rare species of *Coleoptera* in Belarus). Vesti AN Belarusi. N 1: 104–107. (In Russian: abstract in English).
- Tsinkevich V. A. 1998. Obzor zhestkokrylykh nadsemeistva *Cucujoidea* belorusskoi chasti Natsionalnogo parka "Belovezhskaya Pushcha" (Review of *Coleoptera* from *Cucujoidea* superfamily from Belarusian part of the National Park "Belovezkaya Puscha"). Parki Narodowe i Rezerваты Przyrody. Vol. 17 (3) (suppl.): 123–135. (In Russian: abstract in English).
- Tsinkevich V. A. 2000. Novye materialy po faune i ekologii zhestkokrylykh nadsemeistva *Cucujoidea* (*Coleoptera*) Belarusi (New materials on the fauna and ecology of *Coleoptera* from *Cucujoidea* superfamily of Belarus). Vestnik BGU, Minsk. Ser. 2. Khimiya, Biologiya, Geografiya. Vol. 3: 60–63. (In Russian: abstract in English).
- Tsinkevich V., Solodovnikov I., Rud'ko E. 2001. New species of the beetles (*Coleoptera*) for the fauna Eastern Europe and Belarus. Acta Biol. Univ. Daugavp. Vol. 1 (1): 28–29.
- Tsinkevich V. A., Aleksandrovich O. R. 2002. Novye i redkie vidy zhestkokrylykh fauny